



20 YEARS OF SERVICE

EXCELLENCE



MEN'S WATCH 23-20-MANWATCH-MA

Corporate collection mens wristwatch featuring a round black dial with one diamond. Gold toned bezel with leather strap. Water resistant. The North Carolina state seal is imprinted on the face of the watch.

LADIES WATCH 23-20-LADYWATCH-MA

Corporate collection ladies wristwatch featuring a round black dial with one diamond. Gold toned bezel with leather strap. Water resistant. The North Carolina state seal is imprinted on the face of the watch.



LADIES JEWELRY BOX 23-20-WJBOX-MA

Manufactured from red oak hardwood with black vinyl interior. Features include: two main compartments and a removable ring holder that also slides back and forth inside the top compartment as well. There is also one drawer that has three smaller compartments that will accommodate several different sizes of jewelry.

NORTH CAROLINA TOAST PRINT 23-20-PRTNCTOAST-MA

Watercolor print by NC artist Anna Freeman. Print is exclusively available through the Service Awards Program. Print includes charcoal gray mat and is packaged in a clear sleeve. Overall size is 11" x 14".



BEACH BAG WITH NC THEMED BEACH TOWELS 23-20-BEACHBAG-MA

Constructed of durable water resistant yellow nylon cordura and clear vinyl. Snap closure keeps everything secure. Bag contains two 32" x 62" velour terry cotton beach towels, one printed with the NC State Flag and one printed with the NC State Seal. Bag is embroidered with Excellence in Service logo.

LARGE 1 LB. BUNT CAKE PAN W/SCALLOPED EDGES W/STRAP HANDLES 23-20-LGBUNTCKPA-MA

5.5" tall and 10" wide. Dishwasher, microwave and oven safe. Thomas tan glaze / copper red /ash glaze color.





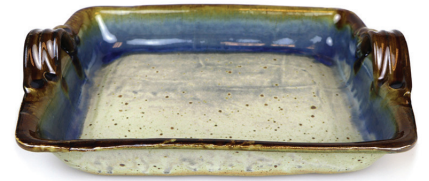
20 YEARS OF SERVICE

EXCELLENCE

LARGE ROASTING PAN W/ STRAP HANDLES

23-20-LGROASTPA-MA

11" wide & 17" long. Overall height 4". Dishwasher, microwave and oven safe. Huckleberry glaze / wood ash glaze color.



BIRDHOUSE W/FLOWERS/BUTTERFLY DECORATIONS

23-20-BIRDHOUSE-MA

Birdhouse comes with wire decorative hanger. Flowers & butterfly decorations are white in color. Birdhouse comes in hive shape. 8.5" tall and 19.5" around in diameter. 1.5" Shrouded opening under the flower & butterfly decoration and a 1" drain hole on the bottom of the birdhouse. Solid copper red glaze in color.



NORTH CAROLINA SILK TIE 23-20-MUSSKTIE-MA

Show your state pride with this custom gold 100% silk tie, embroidered in black with the shape of our State.



WEATHER VANE

23-20-WVANELIGHT-MA LIGHTHOUSE

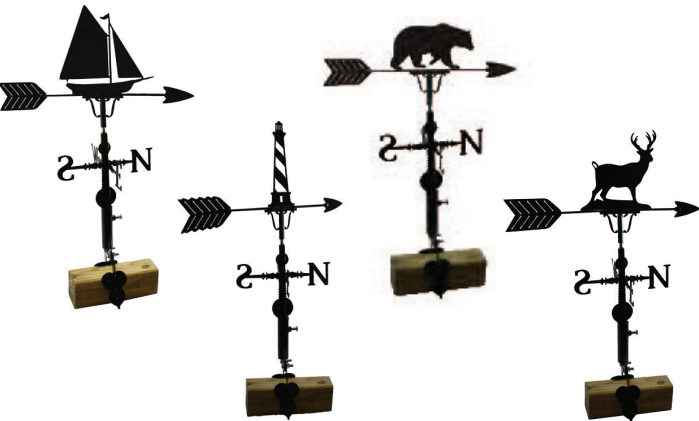
23-20-WVANESLBOAT-MA SAILBOAT

23-20-WVANEBEAR-MA BEAR

23-20-WVANEDEER-MA DEER

Constructed of 14 gauge carbon steel with weather resistant black powder coating. Includes an adjustable roof mount constructed with 1" square tubing.

Overall size 30" tall x 22" width



CORN COB JUG

23-20-CORNCOBJUG-MA

Huckleberry blue with wood-ash glazed corn cob jug with state seal emblem and strap handle.

12" tall and 26" in diameter.

Holds one gallon.

