



15 YEARS OF SERVICE

EXCELLENCE



CANVAS TACKLE BAG 23-15-TACKLEBAG-MA

Constructed of durable water resistant green nylon cordura. Features two removable 11" x 7.25" plastic storage boxes and an extra 11" x 5" storage space inside the bag with elastic to hold equipment secure. Includes two outside pockets, webbed shoulder strap and web handle. Overall size is 8.5" H x 11" W X 9" D.

LARGE DUFFEL BAG 23-15-LRGDUFFEL-MA

Constructed of durable black nylon cordura and 2" black polypro webbing. The bag has two outside pockets with zippers, one large inside pocket and a hard plastic insert to carry heavy gear. Overall size 24" W x 13" H. Embroidered with the Excellence in Service logo.



NORTH CAROLINA THROW 23-15-MUSNCTHROW-MA

Manufactured by Pure Country Weavers of North Carolina. Depicts important factual information, state landmarks and cities in North Carolina. Made of 100% cotton and measures 54" x 70".

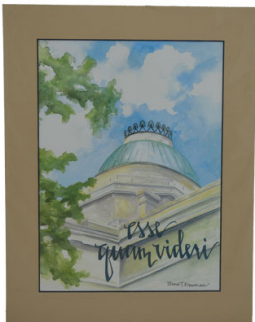
GARMENT BAG 23-15-EMGRMBAG-MA

Constructed of durable black water resistant diamond ripstop nylon. Includes two large outside pockets and sturdy Wally lock latch to keep the garment hangers secure during transport. Two webbed handles with snap closure. Heavy duty zippers. Embroidered with the Excellence in Service logo.



ESSE QUAM VIDERI PRINT 23-15-PRTEQV-MA

Watercolor print by NC artist Anna Freeman. Print is exclusively available through the Service Awards Program. Print includes sandstone colored mat and is packaged in a clear sleeve. Overall size is 11" x 14".



WOODEN TOOL BOX 23-15-UTILBOX-MA

Manufactured from red oak hardwood and coated with linseed oil for durability. Overall size 24"W x 8"D x 12"H.



CUTTING BOARD 23-15-CUTGBRD-MA

This cutting board is Maple Hardwood 2" thick cutting board that is made in North Carolina. It measures at 16" x 12" with a lip running around the edge of the board to catch drips.



WINE GLASS SET 23-15-WINEGLASS-MA

Set of 4 wine glasses engraved with the Excellence in Service logo. Clear glass design with a rounded stem.





15 YEARS OF SERVICE

EXCELLENCE

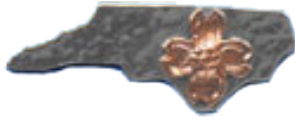


STATE SEAL BROACH 23-15-MUSNCBOCH-MA

This elegant brooch features a colorful enameled State Seal surrounded by two rows of Swarovski crystals, set in silver plate. A lovely addition to a ladies lapel. Made in the US.

STATE SEAL CUFFLINKS 23-15-MUSNCCUFF-MA

Silver plated with embossed colored enamel design of the North Carolina State Seal.



NORTH CAROLINA COPPER PIN

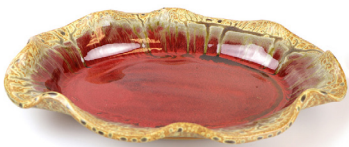
23-15-MUSNYEPIN-MA

Hammered sterling silver pin coated with copper removed from the dome of the old Capitol Building.

MEDIUM ROASTING PAN W/HEAVY LUG HANDLES

23-15-MEDROASTPA-MA

14.5" long, 10" wide overall depth 3.5". Dishwasher, microwave, and oven safe. Huckleberry glaze / wood ash glaze color.



LARGE FLUTED OVAL PLATTER 23-15-LGFLOVPLAT-MA

12" wide, 17" long, 2.5" overall depth. Dishwasher, microwave, and oven safe. Thomas Tan glaze / copper red / ash glaze color.



RAIN BARREL 23-15-RNBRL-MA

Rain barrel manufactured from a recycled pickle barrel. Includes spout and connectors.

MASTER GRILL KIT 23-15-GRILLKIT-MA

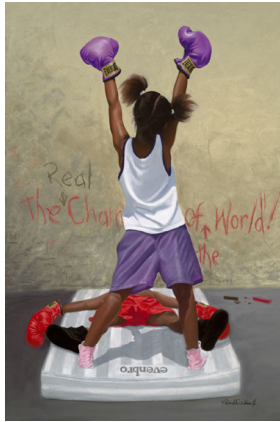
Includes master grill apron and barbeque set. Apron is royal blue/black and includes detachable bottle opener, padded oven mitt, drink holder and towel. Excellence in Service logo screen printed on the front. Apron is machine washable. Barbeque set comes in a sturdy carry case containing a wood handled spatula with bottle opener, silicone basting brush and tongs.





15 YEARS OF SERVICE

**E
X
C
E
L
L
E
N
C
E**



THE WRITINGS ON THE WALL II OPEN EDITION MINI PRINT
23-15-WRITTINGS-WALL
6.5" x 10" (image size)
7.5" x 11" (paper size)



"PINK POWER" FIGHTING FOR THE CURE OPEN EDITION MINI PRINT
23-15-WRITING-PINK
6.5" x 10" (image size)
7.5" x 11" (paper size)



A PRAYER FOR PEACE OPEN EDITION PRINT
23-15-PRAYERFORPEACE
7" x 10" (image size)
8" x 11" (paper size)



WHAT THE FUTURE HOLDS OPEN EDITION MINI PRINT
23-15-ENCOURAGECHILD
7" x 10" (image size)
8" x 11" (paper size)



WHERE'S THE BIRDIE OPEN EDITION MINI PRINT
23-15-WHERESBIRDIE
7" x 10" (image size)
8" x 11" (paper size)



WHERE'S THE BIRDIE 3 OPEN EDITION MINI PRINT
23-15-WHERESBIRDIE3
7" x 10" (image size)
8" x 11" (paper size)



FAITHFUL JOURNEY MINI PRINT
23-15-FAITHFUL-JOURN
7" x 7" (image size)
8" x 8" (paper size)



TRANQUIL PASSAGE II OPEN EDITION MINI PRINT
23-15-TRANQUIL-PASS
10" x 3.3" (image size)
11" x 4.3" (paper size)